



Zenith
Collection



 Wilsonart

Pictured: Zenith worktop, splashback and breakfast bar in Marbre Veneto





Pictured: Zenith worktop and splashback in Tectonica Fizzy

What is Zenith?

Designed to look, feel and perform like stone, Zenith is a compact laminate. That means it can be cut and fit on site with no special tools required - and no long and expensive lead times for templating and specialist fitting.

Manufactured for toughness with a 12.5mm thickness and solid, coloured-core composition, Zenith is fully waterproof with a consistent colour all the way through and double-sided decorative finish, making it a great choice for undermount sinks, cutting into bespoke shapes and creating matching shelves or sills.

Since it's super hardwearing with realistic patterns, textures and sleek profile, Zenith makes a great contemporary alternative to stone, marble and quartz – ideal for placement in homes and commercial spaces.

Installation

Fitting Zenith does not call for any special tooling, but we recommend consulting the installation guide at the back of this brochure before you begin, as the method differs slightly from laminate worktop installation.



Antibacterial

Zenith surfaces are manufactured with Antibacterial Protection as standard.



Waterproof

Zenith surfaces are 100% waterproof and ideal for use with undermount sinks.



Hardwearing

Zenith surfaces are super hardwearing, tested to EN438 standards against common causes of wear and damage.

Zenith Range



Marbre Veneto

Texture: Extra Matt



Core: Warm White

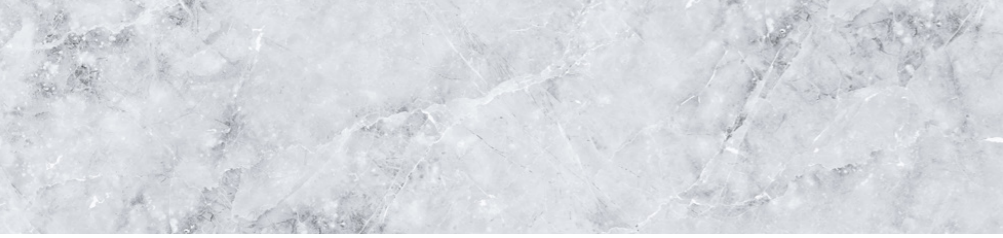


Torrano Marble

Texture: Extra Matt



Core: Warm White

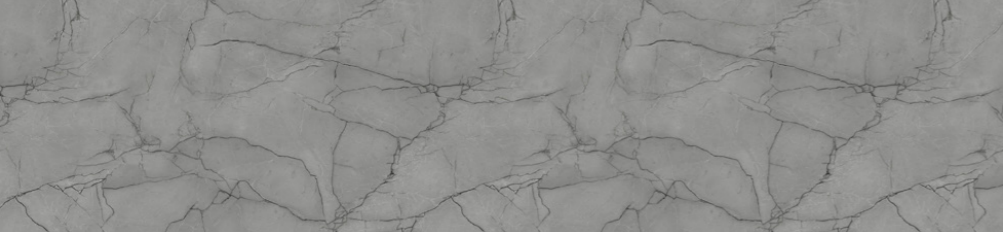


Marmo Treviso

Texture: Extra Matt



Core: Cool Grey



Marmo Grigio

Texture: Extra Matt

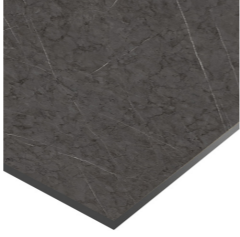


Core: Dark Grey



Cloudy Nova

Texture: Extra Matt



Core: Dark Grey

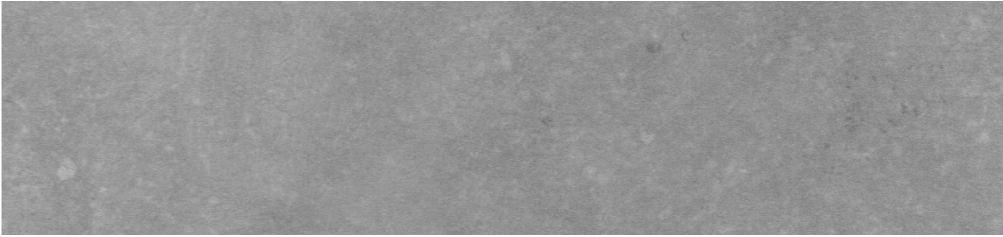


Chaux Sablee Fizzy

Texture: Extra Matt



Core: Cool Grey



Tectonica Fizzy

Texture: Extra Matt



Core: Cool Grey



Woodstone Grey

Texture: Granite



Core: Black



Concrete Griffé

Texture: Extra Matt



Core: Light Grey



Cloudy Cement

Texture: Extra Matt



Core: Light Grey

Zenith Range



Boston

Texture: Granite



Core: Cool Grey



Roc de Molene

Texture: Roche



Core: Light Grey



Trieste

Texture: Extra Matt



Core: Cream



Blanc Crystal

Texture: Fusion

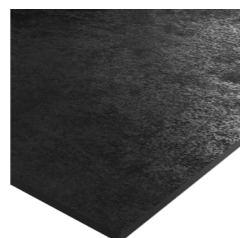


Core: Cold White



Noir Fusion

Texture: Fusion



Core: Black



Caldeira

Texture: Roche



Core: Black

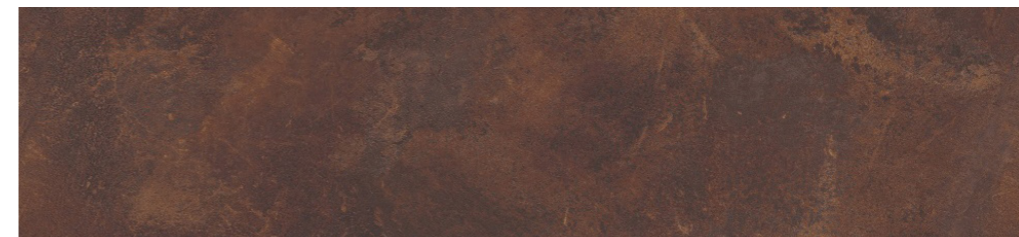


Grey Caldeira

Texture: Extra Matt



Core: Dark Grey



Rouille

Texture: Granite



Core: Black



Painting Brown

Texture: Extra Matt

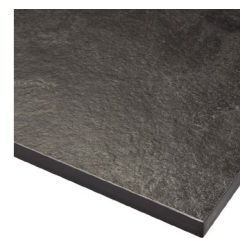


Core: Light Brown



Magma

Texture: Roche



Core: Black



Pictured: Zenith worktop and breakfast bar in Noir Fusion



Pictured: Zenith worktop and upstand in Chaux Sablee Fizzy

Availability

Design	Texture	Core Colour	Worktop 3050x610x12.5mm	Worktop 3050x650x12.5mm	Breakfast Bar 3050x900x12.5mm	Breakfast Bar 3050x950x12.5mm	Upstand 3050x100x12.5mm	Splashback 3000x600x9mm
Grey Caldeira	Extra Matt	Dark Grey		•		•	•	•
Roc De Molene	Roche	Light Grey		•		•	•	•
Concrete Griffe	Extra Matt	Light Grey		•		•	•	•
Trieste	Extra Matt	Cream		•		•	•	•
Tectonica Fizzy	Extra Matt	Cool Grey		•		•	•	•
Chaux Sablee Fizzy	Extra Matt	Cool Grey		•		•	•	•
Painting Brown	Extra Matt	Light Brown		•		•	•	•
Noir Fusion	Fusion	Black		•		•	•	•
Marbre Veneto	Extra Matt	Warm White		•		•	•	•
Torrano Marble	Extra Matt	Warm White		•		•	•	•
Cloudy Nova	Extra Matt	Dark Grey		•		•	•	•
Caldeira	Roche	Black		•		•	•	•
Magma	Roche	Black		•		•	•	•
Rouille	Granite	Black		•		•	•	•
Woodstone Grey	Granite	Black		•		•	•	•
Cloudy Cement	Extra Matt	Light Grey	•		•		•	•
Marmo Treviso	Extra Matt	Cool Grey	•		•		•	•
Marmo Grigio	Extra Matt	Dark Grey	•		•		•	•
Blanc Crystal	Fusion	Cold White		•		•	•	•
Boston	Granite	Cool Grey		•		•	•	•

Technical Specifications

We have high standards. Zenith has passed the following rigorous testing:

Property	Standard	Pass
Modulus of elasticity	ISO 178	•
Bending strength	ISO 178	•
Resistance to boiling water	EN 438-2-12	•
Impact resistance (large diameter ball)	EN 438-2-21	•
Resistance to cracking	EN 438-2-24	•
Abrasion resistance	EN 438-2-10	•
Resistance to steam	EN 438-2-14	•
Dry heat resistance 180°	EN 438-2-16	•
Resistance to humidity	EN 12721	•
Scratch resistance	EN 438-2-25	•
Stain resistance groups 1, 2 and 3	EN 438-2-26	•
Colour fastness under artificial light	EN 438-2-27	•
Resistance to cigarette burns	EN 438-2-30	•
Fire rating	EN 13501-1	•
Calorific value	EN ISO 1716	•
Food safe	EN 13130-1	•
Formaldehyde emission	EN 717-2	•
Antibacterial properties	JIS Z 2801	•

Installation

When you buy a Zenith worksurface, your detailed installation guide will be included. You can also find our in-depth installation videos on YouTube by searching “Zenith worktop installation guide.”

We highly recommend reading the installation guide in full before you begin your Zenith installation. Here, we offer an overview of the fitting process and address some commonly asked questions.

Cutting

Zenith worktops are hardwearing and require good quality machinery and clean, sharp cutters to produce a professional finish. This will ultimately save time and effort.

Slow or soft start tools must be at full speed before cutting begins. To cut through the full thickness of the worktop, work in three passes. The first plunge will clear 4mm, the second plunge another 4mm, and the final plunge will cut through the final depth of the material.

Joining

You can join Zenith surfaces together in either a butt joint or mason's mitre style using biscuit joints and adhesive, with hot melt blocks or G clamps (Figs 1,2,3&4).

Drilling

If drilling through the material, use a sacrificial piece of chipboard on the underside to stop the Zenith surface from flaking. You can drill through the whole of the thickness, or through part – if using a stopped hole, ensure a minimum thickness of 3mm of material remains to remove the risk of cracking.

Profiling Edges

You can remove cut edge sharpness by shaping slightly with a 240 grit sanding block. You can also shape the profile with a router and a pencil round of 1-2mm.

Sinks

Zenith surfaces are ideal for use with inset (Fig 5) and undermount sinks (Fig 6), including Butler and Belfast styles. Please refer both to the Zenith installation guide and your sink manufacturer instructions when fitting.

Drainer Grooves

Drainer grooves are for use with an undermount sink style only. Use a jig and hand router to cut grooves to a maximum of 6mm, then sand to finish. Please refer to the full installation guide and videos for a comprehensive view of the method.

Hob Installation

Zenith surfaces are compatible with most hobs. Most worktops leave a gap between the bottom of the hob and the items immediately beneath, but this gap is decreased due to the 12.5mm thickness of the Zenith surface, so some alterations may be made to plinths to accommodate the lower fit. Please refer to the full installation guide and videos for a comprehensive view of the method.

Oven Installation

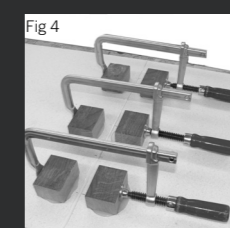
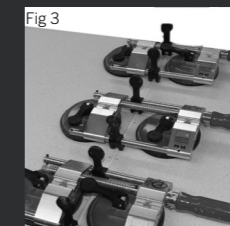
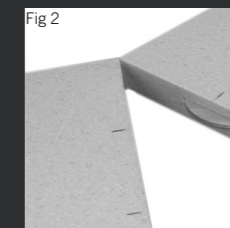
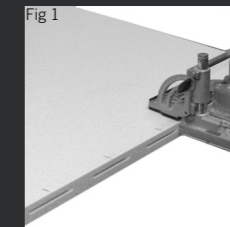
Zenith is recommended for single oven installation only. The shelf at the bottom of the unit can be lowered by 20—25mm by removing and refastening further down. The front panel can be trimmed into two; place one above and below to frame the oven.

Finishing

There is no need to polish or oil the surface. For a smooth finish to exposed edges, you can use a palm sander in 180 > 240 > 400 grit ultrafine paper, then apply oil only to the exposed edges. Please refer to the full installation guide and videos for a comprehensive view of the method.

Care and Maintenance

Zenith surfaces are easily maintained with mild detergent and a microfibre cloth. Do not use acidic or abrasive cleaners. Every day spills should be wiped away without delay to protect from potential staining.





Pictured: Zenith breakfast bar in Cloudy Nova

www.wilsonart.co.uk
(+44) 0 1388 774 661
customerservices@wilsonart.co.uk

Join the Installer Network for free installation training! Scan the QR code and fill in the form to receive notifications when training is available. Alternatively, visit: www.wilsonart.co.uk/wilsonart-installer-training

